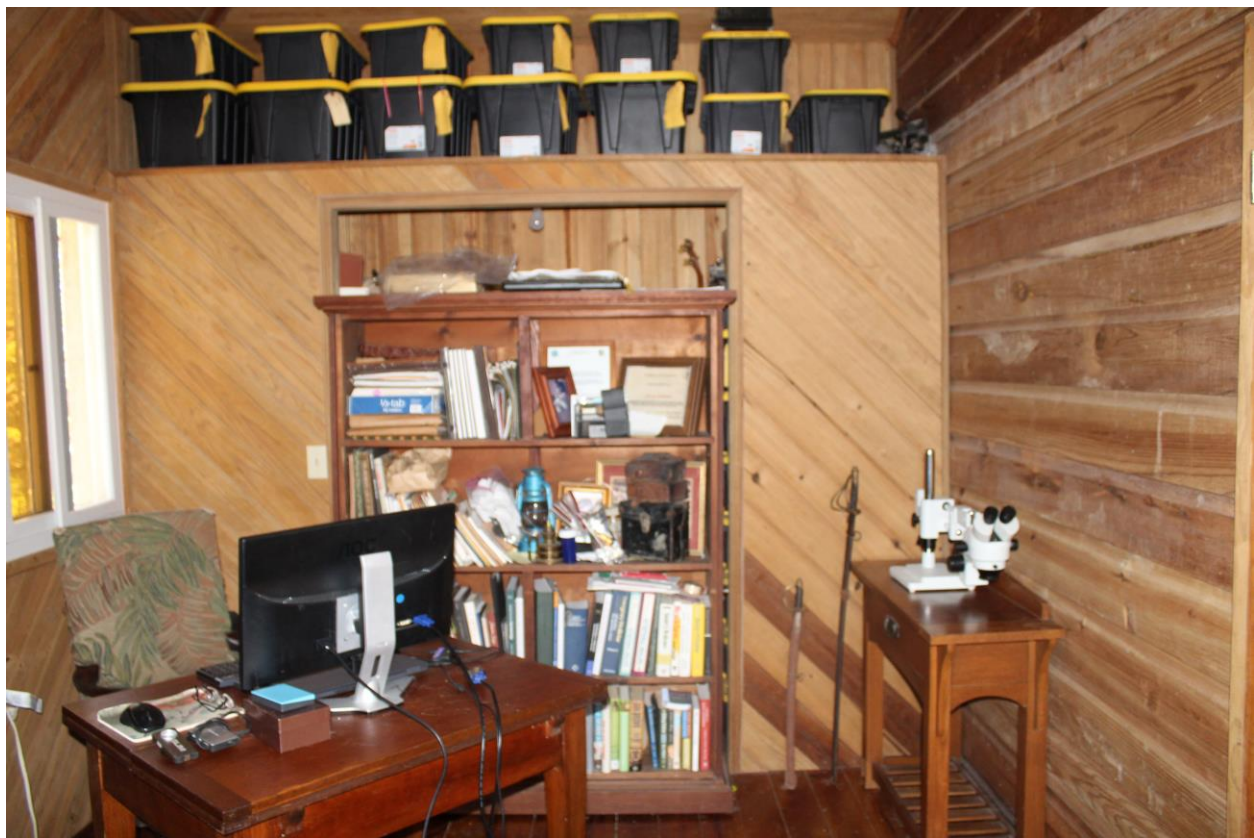


THE LAB

Okay, Okay I know the progress doesn't seem like much, but allow me this seemingly trivial victory. For me it's a huge conquest.

Picture this.... A house with every room filled to a depth of six feet with the black and yellow dry boxes in the pictures. Sorting all of this out is like playing a 3D game of free cell. Couldn't move a box without moving another to make room. I would have taken a picture but I couldn't find my camera.

So now, having endured months of frustration, I have *some* working space to exercise my sometimes-astounding capacity for inefficiency, in this case, the application of a complex spatial organizational development.



The room is 9'x16' and the west half shown above was after months of reorganization. Next step was to move the bookcase and remove the front wall of the closet behind it. The house is of robust construction. All of the interior walls are finished with one-inch-thick pine bead boards so the job was not as easy as expected. All of the wood removed is to be reused and the upper shelf will be retained with cantilevered supports where required. The closet is 22" deep. There will be a custom-built observation bench to receive my current scopes as "observation stations" with dedicated illumination for transmitted, epi, polarization, phase contrast, darkfield

applications. A specimen prep station with dissecting scope(s), slide making apparatus will go under the window to the left.



This shows the wall removed, braces in place, salvaged boards bottom left. 90% of my microscopy kit is in the boxes above the shelf and two of the stacked ones below. The rest contain some of my 26 individual collections of vintage “things” like typewriters, cameras and sewing machines. I should do an article on collecting stuff at a later date. The wall you are looking at will have the shelving for the apothecary collection and a built in variable AC/DC power supply with antique, fully functional electric gauges and switches. The challenge will be to make all the shelves etc as dust-proof cabinets This Lab is now getting to the “fun” stage and devoting time to it not does not necessarily endanger matrimonial harmony as it will provide my darling with home veterinary capabilities. The cabinets, bench etc. will be furniture quality finish and trim, varnished and detailed. It is intended to be period correct for an early 20th century laboratory. A Studly Tool Chest of microscopy if you will. That’s the plan (my whole management career has been predicated upon having a plan so you have something to deviate from).

I have a personal inspiration to achieve this. Definitely more to come.

Otherwise, here in Roatan we wish you a Merry and Peaceful Christmas or your holiday season of choice. My prayers this year are for mankind in general, common sense to prevail and sanity to be more than just a state of mind.

God Bless all.

Joseph Wilhelm

Email – gwillhelm AT metsonmarine DOT com

Editor's note - the earlier essays in the series are in the [Library](#).

Published in the December 2023 issue of *Micscape* magazine.

www.micscape.org